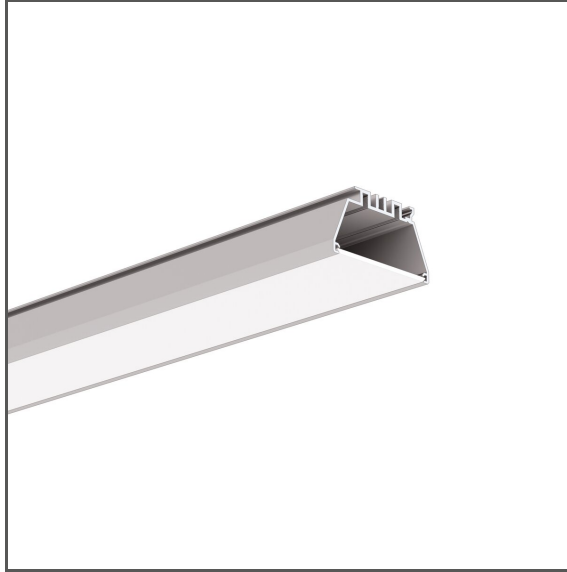


Profile OMODO-50

Ref. A18053

Ref. arch 18053



IP20



- Easy maintenance
- Possibility to obtain UGR < 19
- High lumen output
- Possibility to mount the power supply in the luminous part of the luminaire

APPLICATION

- main and decorative lighting

MOUNTING

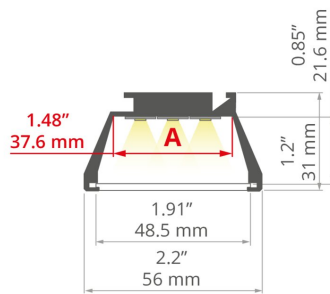
- in drywall, using a dedicated mounting track and screws

ADDITIONAL INFORMATION

- both LED strips and LED current modules can be used
- safety due to high vibration resistance
- when choosing a different length of profiles / covers than available in the standard, you should additionally choose the cutting service at KLUŚ

TECHNICAL DRAWING

1:2



TECHNICAL SPECIFICATIONS

Material	aluminum
Color	■ silver anodized
Possible fixture IP	20
Possible fixture shapes	linear, polygonal
Profile cross-section	rectangular
Width	56 mm
Height	31 mm
LED gluing width A	37.6 mm
Number of LED strips A (8 mm wide)	4
Max power of a single KLUŚ LED strip	24 W/m
Building type	Commercial, Retail, Entertainment/ Arts, HoReCa object
Facility zone	office, communication routes and corridors, conference room, lobby / foyer

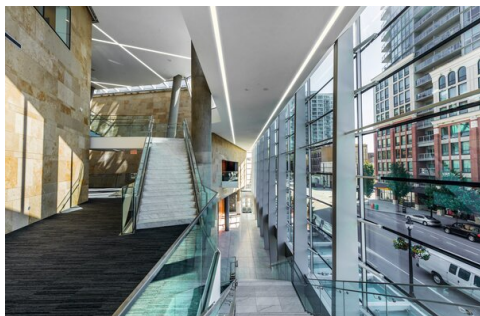
Length	Ref
1000 mm	A18053A_1 18053ANODA_1
2005 mm	A18053A_2 18053ANODA_2
3010 mm	A18053A_3 18053ANODA_3

Profile OMODO-50

Ref. A18053

Ref. arch 18053

SAMPLE PROJECTS



RELATED PROFILES > MOUNTING TRACKS



RAM-KOZE-50

A18055

Ref. arch 18055



RAM-KOL-50

A18060

Ref. arch 18060



RAM-TEK-50

A18059

Ref. arch 18059

RELATED ACCESSORIES > COVERS

NAME	MATERIAL	MATERIAL TRANSMITTANCE	COLOR	REF.
HSP	PC	73 %	frosted	B17058F 17058
			microprism	B17058M 17169

B17058M
17169OP

RELATED ACCESSORIES > END CAPS

NAME	MATERIAL	COLOR	REF.
OMODO-50	ABS	gray	C28026C02 24353

Profile OMODO-50

Ref. A18053

Ref. arch 18053

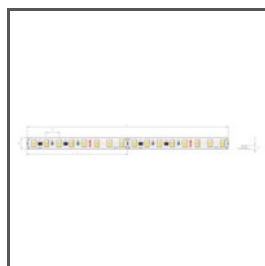
RELATED ACCESSORIES > RELATED LED > ADJUSTABLE WHITE / DIM TO WARM



K-27/50-1440-24V

K-27/50-1440-24

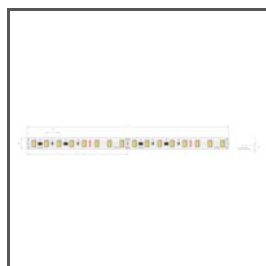
RELATED ACCESSORIES > RELATED LED > HIGH EFFICACY



K-HE-0480-HD-24V

K-HEHD-0480-24

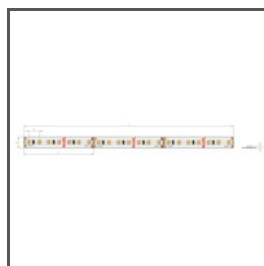
Ref. arch K-HE-0480-HD-24V



K-HE-0960-HD-24V

K-HEHD-0960-24

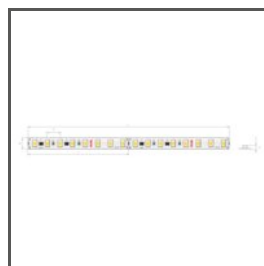
Ref. arch K-HE-0960-HD-24V



K-HE-1440-HD-24V

K-HEHD-1440-24

Ref. arch K-HE-1440-HD-24V



K-HE-1920-HD-24V

K-HEHD-1920-24

Ref. arch K-HE-1920-HD-24V

RELATED ACCESSORIES > RELATED LED > SIDE EMITTING



WP-K-SE-1210-8-24V

KWP-SE-1210-24-8

Ref. arch WP-K-SE-1210-8-24V

RELATED ACCESSORIES > RELATED LED > WHITE MONO



K-0530-HD-24V

K-HD-0530-24

Ref. arch K-0530-HD-24V



K-1220-24V

K-1220-24

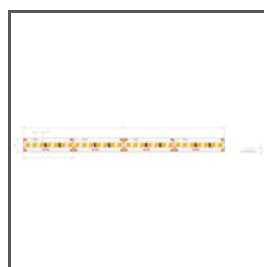
Ref. arch K-1220-24V



K-1275-24V

K-1275-24

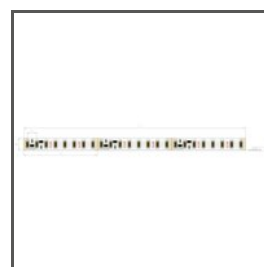
Ref. arch K-1275-24V



K-1910-HD-24V

K-HD-1910-24

Ref. arch K-1910-HD-24V



K-2300-24V

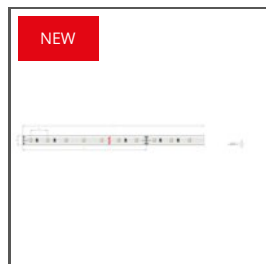
K-2300-24

Ref. arch K-2300-24V

Profile OMODO-50

Ref. A18053

Ref. arch 18053



K-0480-24V
K-0480-24
Ref. arch K-0480-24V



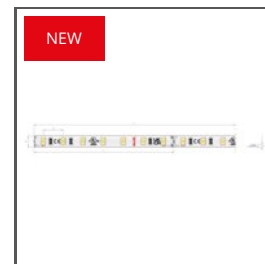
K-0960-24V
K-0960-24
Ref. arch K-0960-24V



K-1440-24V
K-1440-24
Ref. arch K-1440-24V



K-2400-24V
K-2400-24



K-CR-0480-24V
K-CR-0480-24



K-CR-0960-24V
K-CR-0960-24



K-CR-1440-24V
K-CR-1440-24



K-VHE-0480-24V
K-VHE-0480-24



K-VHE-0960-24V
K-VHE-0960-24



K-VHE-1440-24V
K-VHE-1440-24



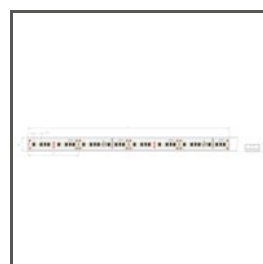
K-HD-0480-24V
K-HD-0480-24



K-HD-0960-24V
K-HD-0960-24



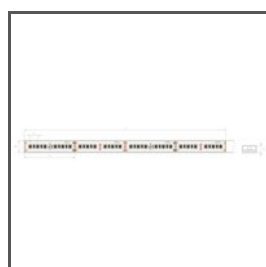
K-HD-1440-24V
K-HD-1440-24



WP-K-1220-24V
KWP-1220-24
Ref. arch WP-K-1220-24V



WP-K-1220-IP65-24V
KWP-1220-IP65-24
Ref. arch WP-K-1220-IP65-24V



WP-K-1275-24V
KWP-1275-24
Ref. arch WP-K-1275-24V



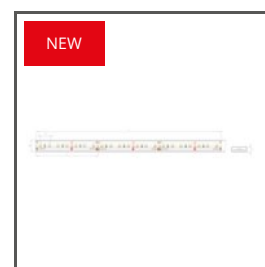
WP-K-1910-HD-IP65-24V
KWP-GHD-1910-24
Ref. arch WP-K-1910HDIP6524V



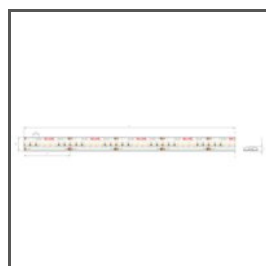
WP-K-1440-24V
KWP-1440-24
Ref. arch WP-K-1440-24V



WP-K-0480-24V
KWP-0480-24
Ref. arch WP-K-0480-24V



WP-K-0960-24V
KWP-0960-24
Ref. arch WP-K-0960-24V



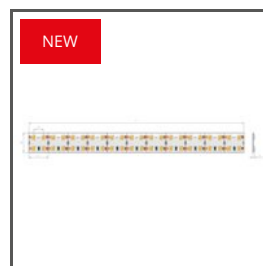
KWP-GHD-0480-24V
KWP-GHD-0480-24



KWP-CR-0480-24
KWP-CR-0480-24



KWP-CR-0960-24
KWP-CR-0960-24



K2-1920-24V
K2-1920-24



K3-2880-24V
K3-2880-24

Profile OMODO-50

Ref. A18053

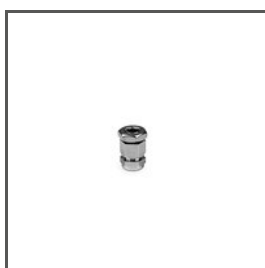
Ref. arch 18053

RELATED ACCESSORIES > OTHER RELATED ACCESSORIES > ADDITIONAL ITEMS



SCREW
2.9X6.5 DIN7981F
Z70283
Ref. arch 70283

RELATED ACCESSORIES > OTHER RELATED ACCESSORIES > OTHER



GLAND
M8x1
C42265N00
Ref. arch 42265



GLAND
6,4x3
C42264C07
Ref. arch 42264

RELATED ACCESSORIES > OTHER RELATED ACCESSORIES > SILICONE CORDS



SILICONE CORD
KR
C24352C00
Ref. arch 24352